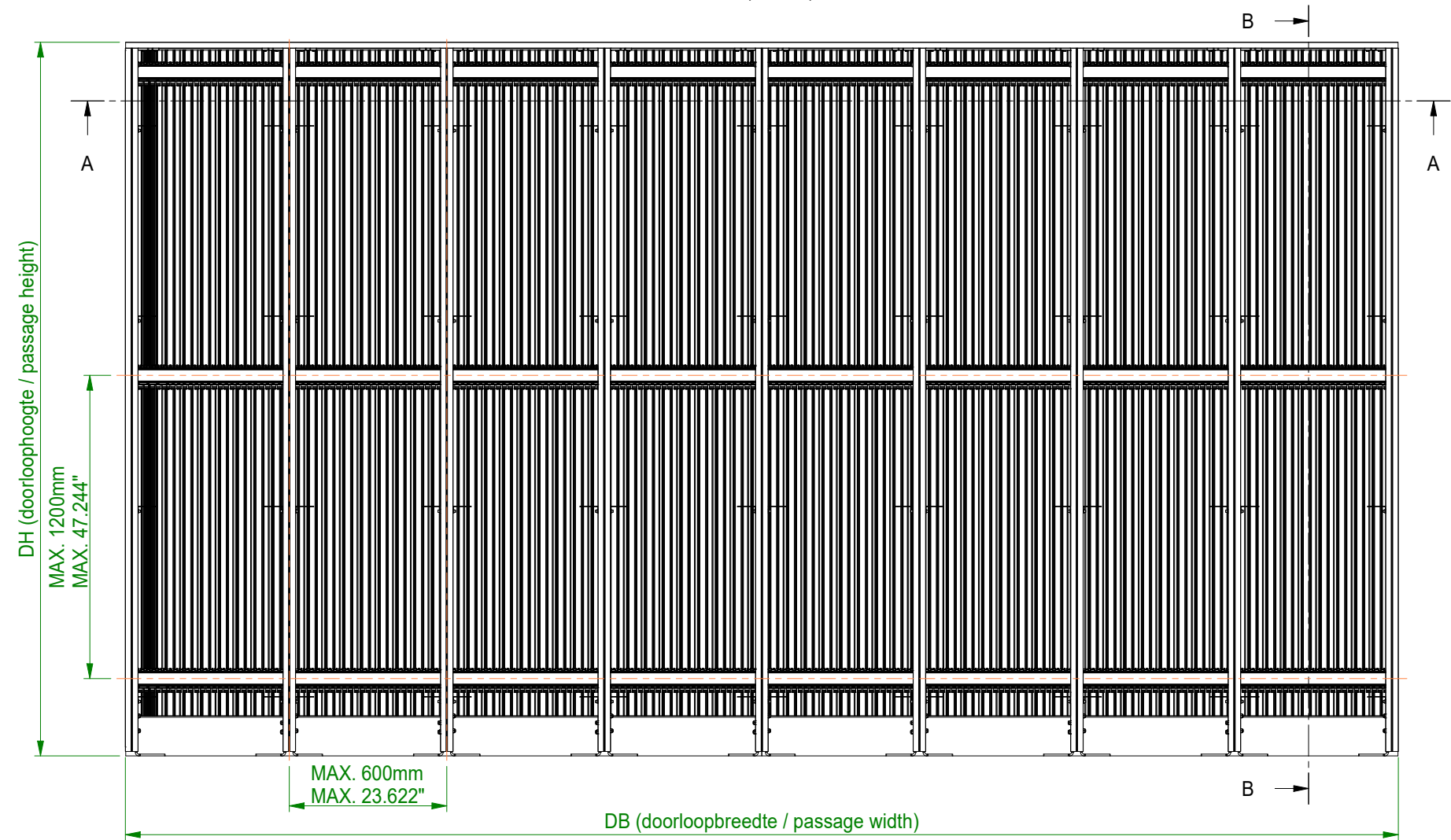
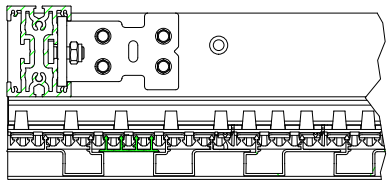


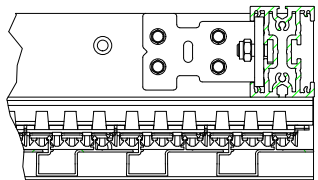
A-A ( 1 : 20 )



LEFT ( 1 : 5 )

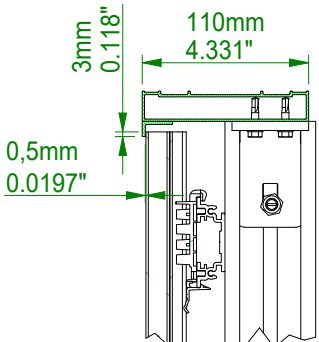


RIGHT ( 1 : 5 )



TOP

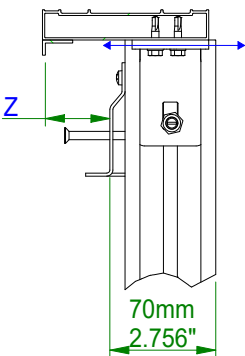
LINARTE



TOP ( 1 : 5 )

CASCO

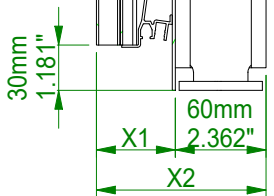
move poles according to wood package thickness  
(hor. support structure + vert. wood cladding)



Type	Z (min)	Z (max)
WOOD	35mm 1.378"	56,5mm 2.224"

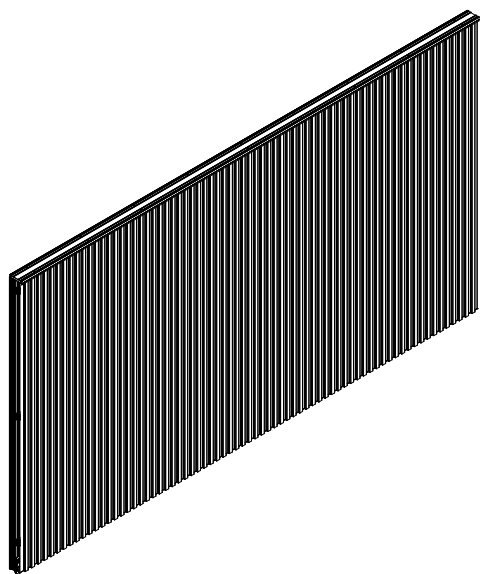
BOTTOM

B-B ( 1 : 20 )

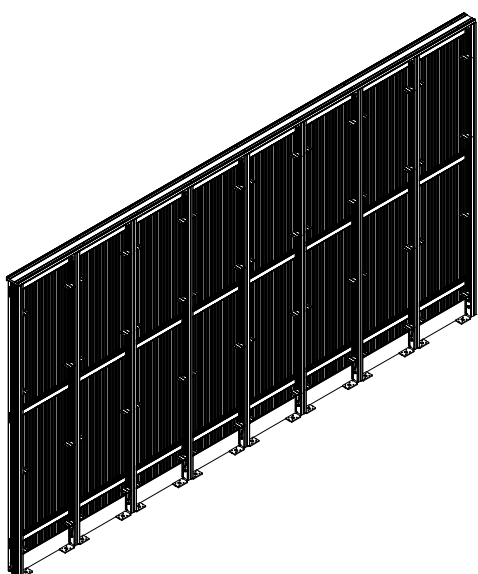


BOTTOM ( 1 : 5 )

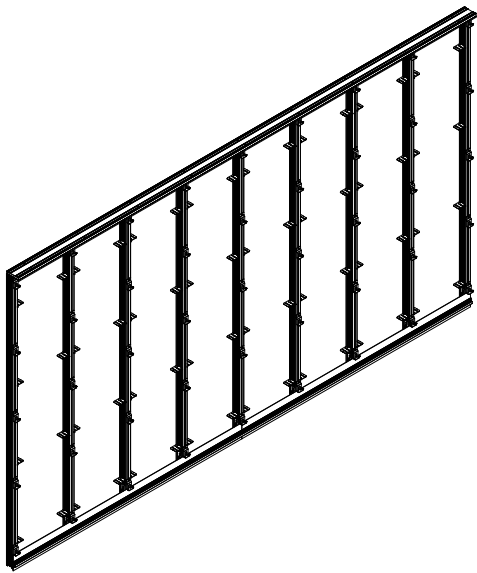
Type	X1	X2
BLOCK 16	52,2mm 2.055"	112,2mm 4.417"
EVEN	61,7mm 2.429	121,7mm 4.791"




LINARTE - FRONT



LINARTE - BACK



CASCO - FRONT

Mat :	Finish :	Weight : 127,077 kg	Area :	Volume : 64882,702 cm³	Base part :	Tol. :
 Creating healthy spaces www.renson.eu - 8790 Waregem (Belgium) <small>This document and all its content, including but not limited to the drawings, pictures, photos, etc. is owned by one or more entities of the Renson Group. Any dissemination or reproduction in part or whole in any form is prohibited without explicit written permission. ©All rights reserved.</small>		Description : <b>grad, linarte,...</b>			Sheet : 1 / 1	
		Use. : <b>PivotDeur_Bekleding</b>			Scale : 1 : 20	
Part. nr. :		Revision :	State : *	Date Saved : 29/01/2024	Size : A3	units in mm
		Doc. nr.: ALG-storage_LIN-wall		Drawn : kluch		